

SUBMITTAL TO THE BOARD OF SUPERVISORS
COUNTY OF RIVERSIDE, STATE OF CALIFORNIA



ITEM
3.7
(ID # 6547)

MEETING DATE:

Tuesday, March 20, 2018

FROM : ENVIRONMENTAL HEALTH:

SUBJECT: ENVIRONMENTAL HEALTH: CPI Fee Adjustment [\$0]

RECOMMENDED MOTION: That the Board of Supervisors:

1. Receive and File the Notice of Environmental Health Fee Adjustments pursuant to Ordinance 640.

ACTION: Policy

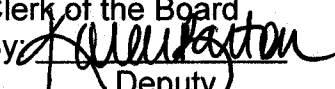


Steve Van Stockum, Director Environmental Health 3/6/2018

MINUTES OF THE BOARD OF SUPERVISORS

On motion of Supervisor Tavaglione, seconded by Supervisor Perez and duly carried by unanimous vote, IT WAS ORDERED that the above matter is approved as recommended.

Ayes: Jeffries, Tavaglione, Washington, Perez and Ashley
Nays: None
Absent: None
Date: March 20, 2018
xc: Env. Health

Kecia Harper-Ihem
Clerk of the Board
By: 
Deputy

**SUBMITTAL TO THE BOARD OF SUPERVISORS COUNTY OF RIVERSIDE,
STATE OF CALIFORNIA**

FINANCIAL DATA	Current Fiscal Year:	Next Fiscal Year:	Total Cost:	Ongoing Cost:
COST	\$ N/A	\$ N/A	\$ N/A	\$ N/A
NET COUNTY COST	\$ N/A	\$ N/A	\$ N/A	\$ N/A
SOURCE OF FUNDS: Revenue from permits and fees.			Budget Adjustment:	No
			For Fiscal Year:	18/19

C.E.O. RECOMMENDATION: Approve

BACKGROUND:

Summary

On July 15, 2014, Item 9-4, the Board approved a revision to Ordinance 640, Environmental Health Service Fees. The revised ordinance authorizes Environmental Health to adjust the fees in Ordinance 640 each year to reflect the change in the Consumer Price Index (CPI). The Ordinance also requires Environmental Health to file a report to the Board of Supervisors, no later than April 15th of each year, reporting the new fees. As required by the Ordinance, the Department of Environmental Health (DEH) must certify in the report that "(1) the new required fees produce sufficient revenue to support the proposed costs of providing the services in the upcoming fiscal year for which required fees are being charged and (2) the new required fees will not produce revenue that exceeds the proposed costs of providing the services in the upcoming fiscal year for which the new required fees are charged."

Environmental Health has submitted its FY 18-19 departmental budget to the Executive Office and expenditures will continue to rise due to factors beyond its control. In accordance with budget policies presented by the Executive Office, DEH is required to absorb increases in ISF rates from HR General and Auto Liability, increases in salaries and benefits (including pension costs), increases to the county cost recovery plan charges (COWCAP), new charges for the RivCoPro e-procurement system, and increased private commercial lease costs for the departments five area offices.

Impact on Residents and Businesses

Businesses will be moderately impacted by increased fees for food facility permits, public pool permits and plan checks, body art permits, solid waste and hazardous material related activities, septic tank and water well permits. Please reference Attachment B and C for further information.

Additional Fiscal Information

DEH used U.S. Department of Labor, Bureau of Labor Statistics report for the Los Angeles-Riverside-Orange County CPI-U area as the relevant CPI (please see Attachment A). As shown in Attachment A, the CPI for 2017 was 3.6%. However, DEH believes that only a 2% increase is required to ensure it covers its operating costs. Therefore, and in accordance with Ordinance 640, the Department of Environmental Health certifies that the 2% adjustment in fees will be sufficient to meet the department's FY 18-19 budget needs of the programs funded by those

**SUBMITTAL TO THE BOARD OF SUPERVISORS COUNTY OF RIVERSIDE,
STATE OF CALIFORNIA**

fees, as submitted to the Executive Office, and that the revenue produced by the adjusted fees are not in excess of what is necessary to provide services in FY 18-19. The Ordinance 640 Fee Adjustment Comparison Schedule and Fee Schedule are attached as Attachment B and C respectively. DEH expects that the extra revenue generated by the increased fees will total approximately \$560,000.

ATTACHMENTS

Attachment A – U.S. Bureau of Labor Statistics Consumer Price Index Report

Attachment B – Ordinance 640 Fee Adjustment Comparison Schedule

Attachment C – Ordinance 640 Fee Schedule



Gregory V. Priaplos, Director County Counsel 3/7/2018

NEWS RELEASE

BUREAU OF LABOR STATISTICS

U. S. D E P A R T M E N T O F L A B O R



For Release: Friday, January 12, 2018

18-8-SAN

WESTERN INFORMATION OFFICE: San Francisco, Calif.

Technical information: (415) 625-2270 BLSinfoSF@bls.gov www.bls.gov/regions/west

Media contact: (415) 625-2270

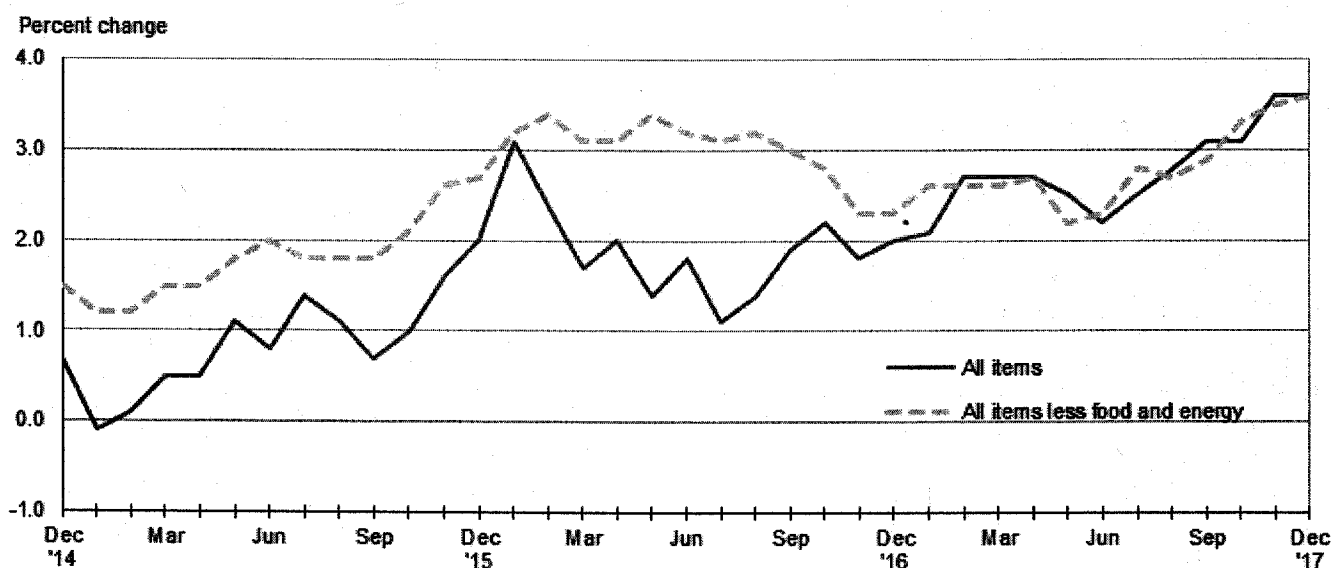
Consumer Price Index, Los Angeles area — December 2017

Area prices were unchanged over the past month, up 3.6 percent from a year ago

Prices in the Los Angeles area, as measured by the Consumer Price Index for All Urban Consumers (CPI-U), were unchanged in December, the U.S. Bureau of Labor Statistics reported today. (See table A.) Assistant Commissioner for Regional Operations Richard Holden noted that during this period higher shelter and food prices helped counter lower gasoline prices. (Data in this report are not seasonally adjusted. Accordingly, month-to-month changes may reflect seasonal influences.)

Over the last 12 months, the CPI-U increased 3.6 percent. (See chart 1 and table A.) Energy prices advanced 6.7 percent, largely the result of an increase in the price of gasoline. The index for all items less food and energy increased 3.6 percent over the year. (See table 1.)

Chart 1. Over-the-year percent change in CPI-U, Los Angeles, December 2014–December 2017



Source: U.S. Bureau of Labor Statistics.

Food

Food prices rose 0.5 percent for the month of December. (See table 1.) Prices for food at home advanced 0.7 percent, while prices for food away from home were virtually unchanged for the same period.

Over the year, food prices increased 2.3 percent. Prices for food away from home advanced 4.3 percent since a year ago, and prices for food at home increased 0.7 percent.

Energy

The energy index decreased 1.8 percent over the month. The decrease was mainly due to lower prices for gasoline (-3.5 percent). Prices for natural gas service advanced 3.4 percent, and prices for electricity edged up 0.1 percent for the same period.

Energy prices advanced 6.7 percent over the year, largely due to higher prices for gasoline (14.9 percent). Prices paid for natural gas service declined 7.0 percent, and prices for electricity decreased 2.4 percent during the past year.

All items less food and energy

The index for all items less food and energy inched up 0.1 percent in December. Higher prices for household furnishings and operations (1.6 percent), recreation (0.5 percent), and shelter (0.2 percent) were partially offset by lower prices for apparel (-1.2 percent), education and communication (-0.5 percent), and medical care (-0.4 percent).

Over the year, the index for all items less food and energy increased 3.6 percent. Components contributing to the increase included shelter (4.3 percent) and recreation (4.1 percent). Partly offsetting the increases was a price decline in apparel (-1.4 percent).

Table A. Los Angeles-Riverside-Orange County CPI-U monthly and annual percent changes (not seasonally adjusted)

Month	2012		2013		2014		2015		2016		2017	
	Monthly	Annual	Monthly	Annual	Monthly	Annual	Monthly	Annual	Monthly	Annual	Monthly	Annual
January.....	0.8	2.1	0.8	2.0	0.5	0.8	-0.3	-0.1	0.7	3.1	0.9	2.1
February.....	0.5	2.1	0.7	2.2	0.5	0.5	0.7	0.1	0.0	2.4	0.6	2.7
March.....	1.0	2.0	0.1	1.3	0.6	1.0	1.0	0.5	0.3	1.7	0.3	2.7
April.....	0.0	1.5	-0.4	0.9	0.0	1.4	-0.1	0.5	0.2	2.0	0.2	2.7
May.....	0.1	1.6	0.1	1.0	0.4	1.7	1.0	1.1	0.5	1.4	0.3	2.5
June.....	-0.4	1.6	-0.1	1.4	0.1	1.8	-0.3	0.8	0.1	1.8	-0.2	2.2
July.....	-0.1	1.9	-0.1	1.3	0.1	2.0	0.7	1.4	0.0	1.1	0.3	2.5
August.....	0.6	2.3	0.1	0.8	-0.1	1.8	-0.3	1.1	0.0	1.4	0.3	2.8
September.....	0.4	2.2	0.2	0.6	0.0	1.7	-0.4	0.7	0.2	1.9	0.4	3.1
October.....	0.8	3.0	0.1	-0.1	-0.1	1.4	0.2	1.0	0.4	2.2	0.4	3.1
November.....	-1.0	2.1	-0.5	0.4	-0.7	1.3	0.0	1.6	-0.4	1.8	0.1	3.6
December.....	-0.7	1.9	0.0	1.1	-0.5	0.7	-0.1	2.0	0.0	2.0	0.0	3.6

The January 2018 Consumer Price Index for the Los Angeles-Riverside-Orange County is scheduled to be released on February 14, 2018.

Consumer Price Index Geographic Revision for 2018

In January 2018, BLS will introduce a new geographic area sample for the Consumer Price Index (CPI). As part of the new sample, Los Angeles and Riverside will have separate indexes. The first indexes using the new structure will be published in February 2018. Additional information on the geographic revision is available at: www.bls.gov/cpi/georevision2018.htm.

Technical Note

The Consumer Price Index (CPI) is a measure of the average change in prices over time in a fixed market basket of goods and services. The Bureau of Labor Statistics publishes CPIs for two population groups: (1) a CPI for All Urban Consumers (CPI-U) which covers approximately 89 percent of the total population and (2) a CPI for Urban Wage Earners and Clerical Workers (CPI-W) which covers 28 percent of the total population. The CPI-U includes, in addition to wage earners and clerical workers, groups such as professional, managerial, and technical workers, the self-employed, short-term workers, the unemployed, and retirees and others not in the labor force.

The CPI is based on prices of food, clothing, shelter, and fuels, transportation fares, charges for doctors' and dentists' services, drugs, and the other goods and services that people buy for day-to-day living. Each month, prices are collected in 87 urban areas across the country from about 6,000 housing units and approximately 24,000 retail establishments--department stores, supermarkets, hospitals, filling stations, and other types of stores and service establishments. All taxes directly associated with the purchase and use of items are included in the index.

The index measures price changes from a designated reference date (1982-84) that equals 100.0. An increase of 16.5 percent, for example, is shown as 116.5. This change can also be expressed in dollars as follows: the price of a base period "market basket" of goods and services in the CPI has risen from \$10 in 1982-84 to \$11.65. For further details see the CPI home page on the Internet at www.bls.gov/cpi and the BLS Handbook of Methods, Chapter 17, The Consumer Price Index, available on the Internet at www.bls.gov/opub/hom/homch17_a.htm.

In calculating the index, price changes for the various items in each location are averaged together with weights that represent their importance in the spending of the appropriate population group. Local data are then combined to obtain a U.S. city average. Because the sample size of a local area is smaller, the local area index is subject to substantially more sampling and other measurement error than the national index. In addition, local indexes are not adjusted for seasonal influences. As a result, local area indexes show greater volatility than the national index, although their long-term trends are quite similar. **NOTE: Area indexes do not measure differences in the level of prices between cities; they only measure the average change in prices for each area since the base period.**

The Los Angeles-Riverside-Orange County, CA. metropolitan area covered in this release is comprised of Los Angeles, Orange, Riverside, San Bernardino, and Ventura Counties in the State of California.

Information in this release will be made available to sensory impaired individuals upon request. Voice phone: (202) 691-5200; Federal Relay Service: (800) 877-8339.

Table 1. Consumer Price Index for All Urban Consumers (CPI-U): Indexes and percent changes for selected periods Los Angeles-Riverside-Orange County, CA (1982-84=100 unless otherwise noted)

Item and Group	Indexes			Percent change from-		
	Oct. 2017	Nov. 2017	Dec. 2017	Dec. 2016	Oct. 2017	Nov. 2017
Expenditure category						
All items	258.883	259.135	259.220	3.6	0.1	0.0
All items (1967=100)	764.857	765.598	765.850	-	-	-
Food and beverages	255.959	256.382	257.263	2.1	0.5	0.3
Food	256.111	256.505	257.669	2.3	0.6	0.5
Food at home	253.154	253.543	255.375	0.7	0.9	0.7
Food away from home	255.903	256.297	256.623	4.3	0.3	0.1
Alcoholic beverages	238.576	239.398	236.145	-0.5	-1.0	-1.4
Housing	292.390	291.580	292.603	3.6	0.1	0.4
Shelter	335.768	335.881	336.552	4.3	0.2	0.2
Rent of primary residence(1)	353.494	355.126	356.235	5.0	0.8	0.3
Owners' equiv. rent of residences(1)(2)	347.802	349.187	350.555	4.4	0.8	0.4
Owners' equiv. rent of primary residence(1)(2)	347.782	349.168	350.535	4.4	0.8	0.4
Fuels and utilities	311.873	304.861	306.585	-0.1	-1.7	0.6
Household energy	270.310	261.185	263.429	-3.5	-2.5	0.9
Energy services(1)	269.104	259.764	262.023	-3.5	-2.6	0.9
Electricity(1)	305.746	305.281	305.653	-2.4	0.0	0.1
Utility (piped) gas service(1)	231.530	200.677	207.555	-7.0	-10.4	3.4
Household furnishings and operations	116.083	114.541	116.428	0.8	0.3	1.6
Apparel	108.180	103.689	102.476	-1.4	-5.3	-1.2
Transportation	199.790	204.715	203.134	7.7	1.7	-0.8
Private transportation	195.800	200.934	199.740	8.4	2.0	-0.6
Motor fuel	235.084	248.485	239.908	15.0	2.1	-3.5
Gasoline (all types)	229.829	242.785	234.242	14.9	1.9	-3.5
Gasoline, unleaded regular(3)	229.964	243.118	234.420	15.0	1.9	-3.6
Gasoline, unleaded midgrade(3) (4)	222.150	233.178	225.746	14.6	1.6	-3.2
Gasoline, unleaded premium(3)	220.764	232.503	224.929	14.4	1.9	-3.3
Medical care	476.461	476.833	475.129	2.1	-0.3	-0.4
Recreation(5)	108.214	108.176	108.741	4.1	0.5	0.5
Education and communication(5)	144.561	144.767	144.025	1.6	-0.4	-0.5
Other goods and services	415.032	413.485	411.138	4.6	-0.9	-0.6
Commodity and service group						
All items	258.883	259.135	259.220	3.6	0.1	0.0
Commodities	177.190	177.916	177.022	3.0	-0.1	-0.5
Commodities less food & beverages	136.079	136.892	135.321	3.8	-0.6	-1.1
Nondurables less food & beverages	180.167	181.792	178.761	6.0	-0.8	-1.7
Durables	92.836	92.847	92.718	-0.2	-0.1	-0.1
Services	331.604	331.427	332.391	3.9	0.2	0.3
Special aggregate indexes						
All items less medical care	249.457	249.702	249.855	3.7	0.2	0.1
All items less shelter	225.188	225.503	225.322	3.1	0.1	-0.1
Commodities less food	140.471	141.294	139.660	3.6	-0.6	-1.2
Nondurables	219.074	220.181	218.884	3.9	-0.1	-0.6
Nondurables less food	185.805	187.412	184.325	5.5	-0.8	-1.6
Services less rent of shelter(2)	334.750	334.144	335.417	3.2	0.2	0.4
Services less medical care services	319.365	319.211	320.260	4.1	0.3	0.3
Energy	249.477	254.283	249.827	6.7	0.1	-1.8
All items less energy	261.559	261.468	261.896	3.4	0.1	0.2

Note: See footnotes at end of table.

Table 1. Consumer Price Index for All Urban Consumers (CPI-U): Indexes and percent changes for selected periods Los Angeles-Riverside-Orange County, CA (1982-84=100 unless otherwise noted) - Continued

Item and Group	Indexes			Percent change from-		
	Oct. 2017	Nov. 2017	Dec. 2017	Dec. 2016	Oct. 2017	Nov. 2017
All items less food and energy	262.829	262.656	262.960	3.6	0.0	0.1

Footnotes

(1) This index series was calculated using a Laspeyres estimator. All other item stratum index series were calculated using a geometric means estimator.

(2) Index is on a December 1982=100 base.

(3) Special index based on a substantially smaller sample.

(4) Indexes on a December 1993=100 base.

(5) Indexes on a December 1997=100 base.

- Data not available

NOTE: Index applies to a month as a whole, not to any specific date.

ATTACHMENT B

**Ordinance 640
Adjusted Fees Only**

Ord 640 #	PERMIT FEE	CURRENT FEE	CPI Adjustment @ 2%
1	Food Facility		
a	Food Facility 1 to 2,000 sq ft		
	i Food Market	\$654.00	\$667.00
	ii Restaurant	\$720.00	\$734.00
	iii Bar/Tavern	\$720.00	\$734.00
	iv 100% Prepackaged Food Facility	\$524.00	\$534.00
b	Food Facility 2,001 to 5,999 sq ft		
	i Food Market	\$986.00	\$1,005.00
	ii Restaurant	\$1,085.00	\$1,106.00
	iii Bar/Tavern	\$986.00	\$1,005.00
	iv 100% Prepackaged Food Facility	\$789.00	\$804.00
c	Food Facility greater than 6,000 sq ft		
	i Food Market	\$1,372.00	\$1,399.00
	ii Restaurant	\$1,449.00	\$1,477.00
	iii Bar/Tavern	\$1,372.00	\$1,399.00
	iv 100% Prepackaged Food Facility	\$1,097.00	\$1,118.00
d	Pre-packaged Food Market 25 to 300 sq ft	\$235.00	\$239.00
e	Additional Food Operation in over 6,000 sq ft facility	\$196.00	\$199.00
f	Hourly inspection/reinspection rate	\$183.00	\$186.00
g	HACCP plan review	\$183.00	\$186.00
h	Public and Private Schools		
	Private/ Public School Limited Food Prep	\$443.00	\$451.00
	Private/ Public School Extensive Food Prep	\$887.00	\$904.00
i	Hotels and Motels		
	Hotel/Motel 100% Pre-packaged	\$260.00	\$265.00
	Hotel/Motel Limited Food Prep	\$514.00	\$524.00
2	Caterer	\$517.00	\$527.00
3	Mobile Food Facility Commissary	\$595.00	\$606.00
4	Seasonal Operation	\$144.00	\$146.00
5 a	Produce Stand	\$367.00	\$374.00
b	Farm Stand	\$275.00	\$280.00
6	Restricted Food Service	\$390.00	\$397.00
7	Cottage Food Operation		
a	Cottage Food - Class A	\$183.00	\$186.00
b	Cottage Food - Class B	\$367.00	\$374.00
9	Community Event		
a	Temporary Event Organizer Permit		
	i Event Organizer Permit		
	1-5 vendors	\$328.00	\$334.00
	6-10 vendors	\$606.00	\$618.00

ATTACHMENT B

**Ordinance 640
Adjusted Fees Only**

Ord 640 #	PERMIT FEE	CURRENT FEE	CPI Adjustment @ 2%
	11-15 vendors	\$886.00	\$903.00
	16-20 vendors	\$1,165.00	\$1,188.00
	21-25 vendors	\$1,444.00	\$1,472.00
	26-30 vendors	\$1,723.00	\$1,757.00
	31-35 vendors	\$2,002.00	\$2,042.00
	36-40 vendors	\$2,280.00	\$2,325.00
	41-45 vendors	\$2,560.00	\$2,611.00
	46-50 vendors	\$2,838.00	\$2,894.00
	51 vendors or more	\$3,118.00	\$3,180.00
	ii Temporary Food Facility Permit	\$199.00	\$202.00
	iii 100% pre-packaged Temporary food facility permit	\$108.00	\$110.00
	iv Stationary Mobile Food Preparation Unit Permit	\$140.00	\$142.00
b	Occasional Event Organizer Permit		
	i Event Organizer Permit		
	1-5 vendors	\$328.00	\$334.00
	6-10 vendors	\$606.00	\$618.00
	11-15 vendors	\$886.00	\$903.00
	16-20 vendors	\$1,165.00	\$1,188.00
	21-25 vendors	\$1,444.00	\$1,472.00
	26-30 vendors	\$1,723.00	\$1,757.00
	31-35 vendors	\$2,002.00	\$2,042.00
	36-40 vendors	\$2,280.00	\$2,325.00
	41-45 vendors	\$2,560.00	\$2,611.00
	46-50 vendors	\$2,838.00	\$2,894.00
	51 vendors or more	\$3,118.00	\$3,180.00
	ii Occasional Food Facility Permit	\$97.00	\$98.00
	iii 100% pre-packaged occasional food facility permit	\$61.00	\$62.00
	iv Stationary Mobile Food Preparation Unit Permit	\$77.00	\$78.00
c	Community Temporary Event Permit		
	iii Temporary events		
	1-5 vendors	\$640.00	\$652.00
	6-10 vendors	\$1,199.00	\$1,222.00
	11-15 vendors	\$1,758.00	\$1,793.00
	16-20 vendors	\$2,317.00	\$2,363.00
	21-25 vendors	\$2,876.00	\$2,933.00
	26-30 vendors	\$3,436.00	\$3,504.00
	31-35 vendors	\$3,994.00	\$4,073.00
	36-40 vendors	\$4,553.00	\$4,644.00
	41-45 vendors	\$5,113.00	\$5,215.00
	46-50 vendors	\$5,672.00	\$5,785.00

ATTACHMENT B

**Ordinance 640
Adjusted Fees Only**

Ord 640 #	PERMIT FEE	CURRENT FEE	CPI Adjustment @ 2%
	51-55 vendors	\$6,231.00	\$6,355.00
	56-60 vendors	\$6,790.00	\$6,925.00
	61-65 vendors	\$7,349.00	\$7,495.00
	66-70 vendors	\$7,909.00	\$8,067.00
	71-75 vendors	\$8,467.00	\$8,636.00
	76-80 vendors	\$9,025.00	\$9,205.00
	81-85 vendors	\$9,585.00	\$9,776.00
	86-90 vendors	\$10,144.00	\$10,346.00
	91-95 vendors	\$10,703.00	\$10,917.00
	96 vendors or more	\$11,262.00	\$11,487.00
iv	Occasional Events		
	1-5 vendors	\$196.00	\$199.00
	6-10 vendors	\$313.00	\$319.00
	11-15 vendors	\$428.00	\$436.00
	16-20 vendors	\$543.00	\$553.00
	21-25 vendors	\$658.00	\$671.00
	26-30 vendors	\$775.00	\$790.00
	31-35 vendors	\$891.00	\$908.00
	36-40 vendors	\$1,006.00	\$1,026.00
	41-45 vendors	\$1,122.00	\$1,144.00
	46-50 vendors	\$1,237.00	\$1,261.00
	51-55 vendors	\$1,353.00	\$1,380.00
	56-60 vendors	\$1,469.00	\$1,498.00
	61-65 vendors	\$1,585.00	\$1,616.00
	66-70 vendors	\$1,700.00	\$1,734.00
	71-75 vendors	\$1,815.00	\$1,851.00
	76-80 vendors	\$1,931.00	\$1,969.00
	81-85 vendors	\$2,048.00	\$2,088.00
	86-90 vendors	\$2,163.00	\$2,206.00
	91-95 vendors	\$2,278.00	\$2,323.00
	96 vendors or more	\$2,394.00	\$2,441.00
10	Food Sales at Swap Meets		
a	Swap Meet 100% pre-packaged, non-potential haz.	\$160.00	\$163.00
b	Swap Meet Organizer Permit		
	1-5 vendors	\$164.00	\$167.00
	6-10 vendors	\$196.00	\$199.00
	11-15 vendors	\$229.00	\$233.00
	16-20 vendors	\$263.00	\$268.00
	21-25 vendors	\$294.00	\$299.00
	26-30 vendors	\$328.00	\$334.00

ATTACHMENT B

**Ordinance 640
Adjusted Fees Only**

Ord 640 #	PERMIT FEE	CURRENT FEE	CPI Adjustment @ 2%
	31-35 vendors	\$361.00	\$368.00
	36-40 vendors	\$393.00	\$400.00
	41-45 vendors	\$421.00	\$429.00
	46-50 vendors	\$453.00	\$462.00
	51 vendors or more	\$487.00	\$496.00
11	Mobile Food Facilities & Mobile Support Units		
a	Pre-packaged Mobile Food Facility	\$410.00	\$418.00
b	Pre-packaged - Push Type Mobile Food Facility	\$160.00	\$163.00
c	Unpackaged Mobile Food Facility	\$578.00	\$589.00
d	Produce Only Mobile Food Facility	\$247.00	\$251.00
e	Mobile Support Unit	\$578.00	\$589.00
f	Food Truck Fee	\$740.00	\$754.00
12	Community Artisan Operation	\$246.00	\$250.00
13	Certified Farmers Market	\$493.00	\$502.00
14	Holiday Operation	\$125.00	\$127.00
15	Vending Machine	\$74.00	\$75.00
16	Public Swimming Pool or Public Spa		
a	Public swimming pool	\$399.00	\$406.00
b	Public spa pool	\$399.00	\$406.00
c	Wading pool	\$399.00	\$406.00
d	Water feature	\$399.00	\$406.00
e	Public swimming pool/spa drained longer than 6 month	\$189.00	\$192.00
17a	Food Facility Plan Check		
i	1-200 Square feet	\$793.00	\$808.00
ii	201-1499 square feet	\$1,397.00	\$1,424.00
iii	1500-2999 square feet	\$1,677.00	\$1,710.00
iv	3000-5999 square feet	\$1,865.00	\$1,902.00
v	6000-9999 square feet	\$2,053.00	\$2,094.00
vi	10000-19000 square feet	\$2,470.00	\$2,519.00
vii	20,000 or more square feet	\$3,264.00	\$3,329.00
ix	Minor remodel	\$452.00	\$461.00
x	Remodel Fee	\$793.00	\$808.00
b	Consulting hourly rate	\$183.00	\$186.00
c	Plan check for Mobile Food Facilities		
i	Unpackaged mobile food facility	\$557.00	\$568.00
ii	Each mobile support unit or ancillary cart	\$557.00	\$568.00
iii	Pre-packaged mobile food facility or ancillary handling potential hazardous foods	\$279.00	\$284.00
iv	Mobile food facility truck or trailer	\$656.00	\$669.00
v	Remodel Fee, per hour	\$183.00	\$186.00

ATTACHMENT B

**Ordinance 640
Adjusted Fees Only**

Ord 640 #	PERMIT FEE	CURRENT FEE	CPI Adjustment @ 2%
d	Incidental Per-Pack Food Plan Check		
	i 1-2999 square feet	\$454.00	\$463.00
	ii 3000-7999 square feet	\$909.00	\$927.00
	iii 8000 or more square feet	\$1,365.00	\$1,392.00
e	Public Swimming Pool Plan Check		
	i 1-1,000 Square feet	\$1,305.00	\$1,331.00
	ii 1,001 and more square feet	\$1,865.00	\$1,902.00
	iii All Spas	\$1,305.00	\$1,331.00
	iv Minor Remodel	\$452.00	\$461.00
	v multiple minor changes	\$793.00	\$808.00
	vi Resurface pool or spa shell finish	\$229.00	\$233.00
f	Consulting hourly rate	\$183.00	\$186.00
18	Other Inspections, Consulting, etc., hourly rate	\$183.00	\$186.00
19	Poultry Ranches	\$977.00	\$996.00
21	Organized Camps	\$644.00	\$656.00
22	Notice of Pendency, per hour	\$183.00	\$186.00
27	Septic Tank Trucks		
	a First Vehicle	\$341.00	\$347.00
	b Each Additional Vehicle Thereafter	\$227.00	\$231.00
	c Lavatory Kart (from aircraft holding tank)	\$161.00	\$164.00
	d Per Maintenance Facility	\$171.00	\$174.00
28	Privately owned/operated solid west facility permit		
	a Permit application for new, revised or closure	\$8,731.00	\$8,905.00
	b Permit application for review or modification	\$1,813.00	\$1,849.00
	c Permit application for large multicounty landfills	\$15,195.00	\$15,498.00
29	Solid Waste Facility Permit		
	b Full Permit	\$4,037.00	\$4,117.00
	c Registration Tier	\$1,049.00	\$1,069.00
	d Notification Tier	\$526.00	\$536.00
30	Admin charge for placing lien for unpaid trash bill	\$73.00	\$74.00
31	Solid Waste Transfer Vehicle, 1st	\$185.00	\$188.00
	a each additional vehicle	\$91.00	\$92.00
32	Land Application of Class A Sewage Sludge		
	a Review of a Registration		
	Each Generator or Processor	\$566.00	\$577.00
	Each Transporter	\$283.00	\$288.00
	Each Tier 2, 3 or 4 site	\$226.00	\$230.00
	b Annual Inspection and Sampling Fees		
	Each Generator or Processor	\$455.00	\$464.00
	Each Transporter	\$113.00	\$115.00
	Each Tier 1 Site	\$384.00	\$391.00

ATTACHMENT B

**Ordinance 640
Adjusted Fees Only**

Ord 640 #	PERMIT FEE	CURRENT FEE	CPI Adjustment @ 2%
	Each Tier 2, 3 or 4 site	\$577.00	\$588.00
33	Medical Waste Generators		
a	Large quantity medical waste generators		
i	Large Quantity Generators		
	1-99 beds		
	With on-site Treatment	\$1,881.00	\$1,918.00
	Without on-site Treatment	\$1,255.00	\$1,280.00
	100-199 beds		
	With on-site Treatment	\$2,842.00	\$2,898.00
	Without on-site Treatment	\$1,799.00	\$1,834.00
	200-250 beds		
	With on-site Treatment	\$3,346.00	\$3,412.00
	Without on-site Treatment	\$2,300.00	\$2,346.00
	251+ beds		
	With on-site Treatment	\$5,016.00	\$5,116.00
	Without on-site Treatment	\$2,925.00	\$2,983.00
ii	Specialty Clinics: Surgical, Dialysis or Rehab		
	With on-site Treatment	\$1,359.00	\$1,386.00
	Without on-site Treatment	\$732.00	\$746.00
iii	Skilled Nursing Facility:		
	1-99 beds		
	With on-site Treatment	\$1,202.00	\$1,226.00
	Without on-site Treatment	\$575.00	\$586.00
	100-199 beds		
	With on-site Treatment	\$1,361.00	\$1,388.00
	Without on-site Treatment	\$732.00	\$746.00
	200 + beds		
	With on-site Treatment	\$1,463.00	\$1,492.00
	Without on-site Treatment	\$835.00	\$851.00
iv	Acute Psychiatric Hospital		
	With on-site Treatment	\$1,045.00	\$1,065.00
	Without on-site Treatment	\$418.00	\$426.00
v	Intermediate Care Facility		
	With on-site Treatment	\$1,255.00	\$1,280.00
	Without on-site Treatment	\$627.00	\$639.00
vi	Primary Care Clinic		
	With on-site Treatment	\$1,361.00	\$1,388.00
	Without on-site Treatment	\$732.00	\$746.00
vii	Licensed Clinical Laboratory		
	With on-site Treatment	\$1,045.00	\$1,065.00
	Without on-site Treatment	\$418.00	\$426.00

ATTACHMENT B

**Ordinance 640
Adjusted Fees Only**

Ord 640 #	PERMIT FEE	CURRENT FEE	CPI Adjustment @ 2%
	viii Health Care Service Plan Facility		
	With on-site Treatment	\$1,361.00	\$1,388.00
	Without on-site Treatment	\$732.00	\$746.00
	ix Veterinary Clinic or Hospital		
	With on-site Treatment	\$1,045.00	\$1,065.00
	Without on-site Treatment	\$418.00	\$426.00
	x Large Quantity Generator Medical Office		
	With on-site Treatment	\$1,045.00	\$1,065.00
	Without on-site Treatment	\$418.00	\$426.00
b	Small Quantity Medical Waste Generator		
	i No storage		
	With on-site Treatment	\$105.00	\$107.00
	Without on-site Treatment	\$52.00	\$53.00
	ii Common Storage Facility Serving:		
	10 or fewer generators	\$209.00	\$213.00
	11 to 50 generators	\$522.00	\$532.00
	51 or more generators	\$1,045.00	\$1,065.00
34	Public Water System		
a	Community Water System Annual Operating Permit:		
	i 15 to 24 service connections	\$562.00	\$573.00
	ii 25 to 99 service connections	\$896.00	\$913.00
	iii 100 to 199 service connections	\$1,120.00	\$1,142.00
b	Non-Community Water System (includes Non-Transient, Non-Community Water Systems)	\$785.00	\$800.00
c	Transient Non-Community non-Food Facility Water Systems with No Water Consumption	\$277.00	\$282.00
d	Transient Non-Community Food Facility Water Systems with No Water Consumption	\$449.00	\$457.00
35	Public Water System Permit Application Processing Fees:		
a	New Community Water System	\$1,120.00	\$1,142.00
b	New Non-Community Water System	\$671.00	\$684.00
c	Amendment to a domestic water supply-change of owner	\$338.00	\$344.00
d	Amendment to a domestic water supply-modification	\$562.00	\$573.00
36	Hourly rate for additional Public Water System work	\$172.00	\$175.00
37	State Small Water Systems Annual Operating Permit	\$1,071.00	\$1,092.00
38	Labor Camp Water System Annual Operating Permit	\$965.00	\$984.00
39	Water Supply Permit Review for State Small and Labor Camp Water Systems		
	Per system:	\$2,044.00	\$2,084.00
40	Bacterial Water Sample Cost of field collection per hour	\$184.00	\$187.00
42	Water System requested inspections, per hour	\$172.00	\$175.00
43	Unified Program Fees for corrective action, per hour	\$183.00	\$186.00

ATTACHMENT B

**Ordinance 640
Adjusted Fees Only**

Ord 640 #	PERMIT FEE	CURRENT FEE	CPI Adjustment @ 2%
46	Hazardous Waste Generator		
a	0-10 persons employed	\$501.00	\$511.00
b	11-25 persons employed	\$750.00	\$765.00
c	26-50 persons employed	\$995.00	\$1,014.00
d	51-100 persons employed	\$1,333.00	\$1,359.00
e	101-200 persons employed	\$1,572.00	\$1,603.00
f	201-300 persons employed	\$2,437.00	\$2,485.00
g	301-500 persons employed	\$3,583.00	\$3,654.00
h	501+ persons employed	\$3,239.00	\$3,303.00
47	Hazardous Waste/Tiered Permitting and CALARP		
a	Permit by Rule	\$2,383.00	\$2,430.00
b	Conditionally Authorized	\$2,372.00	\$2,419.00
c	Conditionally Exempt	\$441.00	\$449.00
48	Hazardous materials business plans (disclosure)		
a	Agricultural Handler	\$300.00	\$306.00
b	Special handler	\$524.00	\$534.00
c	Level I handler	\$778.00	\$793.00
d	Level II handler	\$1,036.00	\$1,056.00
e	Level III handler	\$1,552.00	\$1,583.00
f	PSEC Sites, per hour	\$241.00	\$245.00
g	Exempt facility	\$246.00	\$250.00
49	Accidental Release Prevention Program, per hour	\$241.00	\$245.00
50	Underground Storage Tanks		
a	Each underground tank	\$581.00	\$592.00
b	Permit to construct, install upgrade underground tank		
i	First tank system at facility	\$1,216.00	\$1,240.00
ii	Each additional underground tank system	\$404.00	\$412.00
c	Permit to temporarily or permanently close underground storage tank system		
i	First tank system at facility	\$865.00	\$882.00
ii	Each additional underground tank system	\$241.00	\$245.00
d	Permit to repair or modify underground storage tank	\$865.00	\$882.00
e	Re-inspection fee (consultation per hour)	\$241.00	\$245.00
f	Emergency response hourly rate	\$241.00	\$245.00
51	Consultation fee - hazardous materials, per hour	\$241.00	\$245.00
52	Above Ground Petroleum Storage		
a	Exempt Facilities	\$71.00	\$72.00
b	Tier I facilities	\$71.00	\$72.00
c	Tier II facilities	\$71.00	\$72.00
d	Non-Qualified Facilities	\$214.00	\$218.00
53	Tobacco Retailing	\$436.00	\$444.00
57	Well Evaluation - Private	\$425.00	\$433.00

ATTACHMENT B

**Ordinance 640
Adjusted Fees Only**

Ord 640 #	PERMIT FEE	CURRENT FEE	CPI Adjustment @ 2%
59	Well Permit - Driven	\$59.00	\$60.00
60	Well Permit Extension	\$75.00	\$76.00
61	Well Permit - Second Visit	\$159.00	\$162.00
63	Well Permit - Monitoring - Initial	\$165.00	\$168.00
64	Well Permit - Monitoring - more, same site	\$76.00	\$77.00
65	Well Abandonment	\$183.00	\$186.00
66	Well Permit - Agricultural	\$186.00	\$189.00
67	Well Permit - Individual	\$503.00	\$513.00
68	Well Permit - Community	\$679.00	\$692.00
69	Well Permit - Other (Extract or Injection)	\$318.00	\$324.00
70	Well Permit - Cathodic	\$238.00	\$242.00
72	LU Grading Plan Review	\$106.00	\$108.00
74	LU New Conventional OWTS	\$728.00	\$742.00
75	Advanced Treatment OWTS	\$1,020.00	\$1,040.00
76	LU Holding Tank Approval	\$156.00	\$159.00
77	LU Grease Interceptors	\$229.00	\$233.00
78	LU Septic Verification	\$108.00	\$110.00
80	Annual Operating Permit for Alternative OWTS		
a	Alternative OWTS or Holding Tank	\$214.00	\$218.00
b	Alternative OWTS with Advanced Treatment	\$284.00	\$289.00
81	Backflow Prevention Devices		
a	Backflow initial certification	\$149.00	\$151.00
b	Backflow three year renewal	\$139.00	\$141.00
82	LU site evaluation, per hour	\$183.00	\$186.00
83	Body Art Facilities	\$241.00	\$245.00
84	Body Art Practitioners		
a	Initial Setup Fee	\$61.00	\$62.00
b	Annual Registration Fee	\$61.00	\$62.00
85	Body Art Vehicle	\$302.00	\$308.00
86	Body Art Event Sponsor Permit		
a	Sponsor	\$283.00	\$288.00
b	Body Art Demonstration Booth	\$62.00	\$63.00
87	Body Art Facility/Vehicle Plan Check	\$487.00	\$496.00
88	Body Art Reinspection Fees	\$175.00	\$178.00
91	Industrial Hygiene Fees	\$173.00	\$176.00