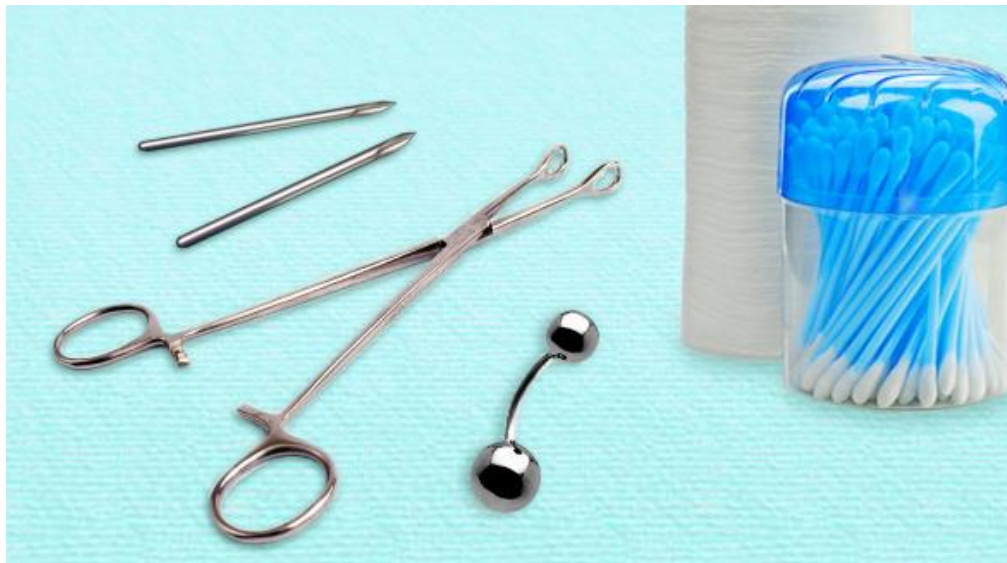
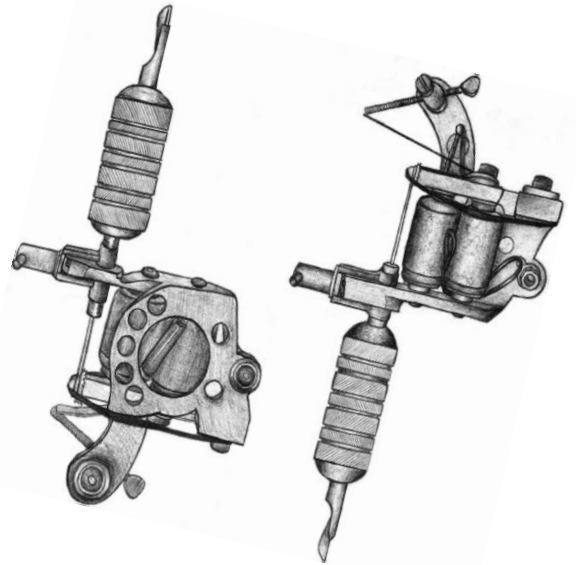


BODY ART FACILITY PLAN CHECK GUIDELINES



GENERAL REVIEW

1. When a tattoo, permanent cosmetic, branding or piercing business is constructed or remodeled, plans and specifications for such construction shall be submitted to the Riverside County Environmental Health Department Local Enforcement Agency (LEA) program. The local (city or county) building official may require plans as well. **California Health & Safety Code (CHSC) § 119312(h)** mandates that anyone proposing to build or remodel a body art facility must submit plans to the LEA.
 - A. Scaled drawing shall include a floor plan indicating the layout of procedure areas, cleaning and sterilization area, sink counters, storage areas, equipment and reception areas shall be submitted for review. **See attached example floor plan**
 - B. Plan submissions shall include a finish schedule for sanitary walls, floors and ceiling as approved by the LEA. **See attached example finish schedule**
 - C. All construction is to be done in accordance with approved plans. **Approval by the LEA and all applicable agencies must be obtained before commencing work.**

FACILITY CONSTRUCTION

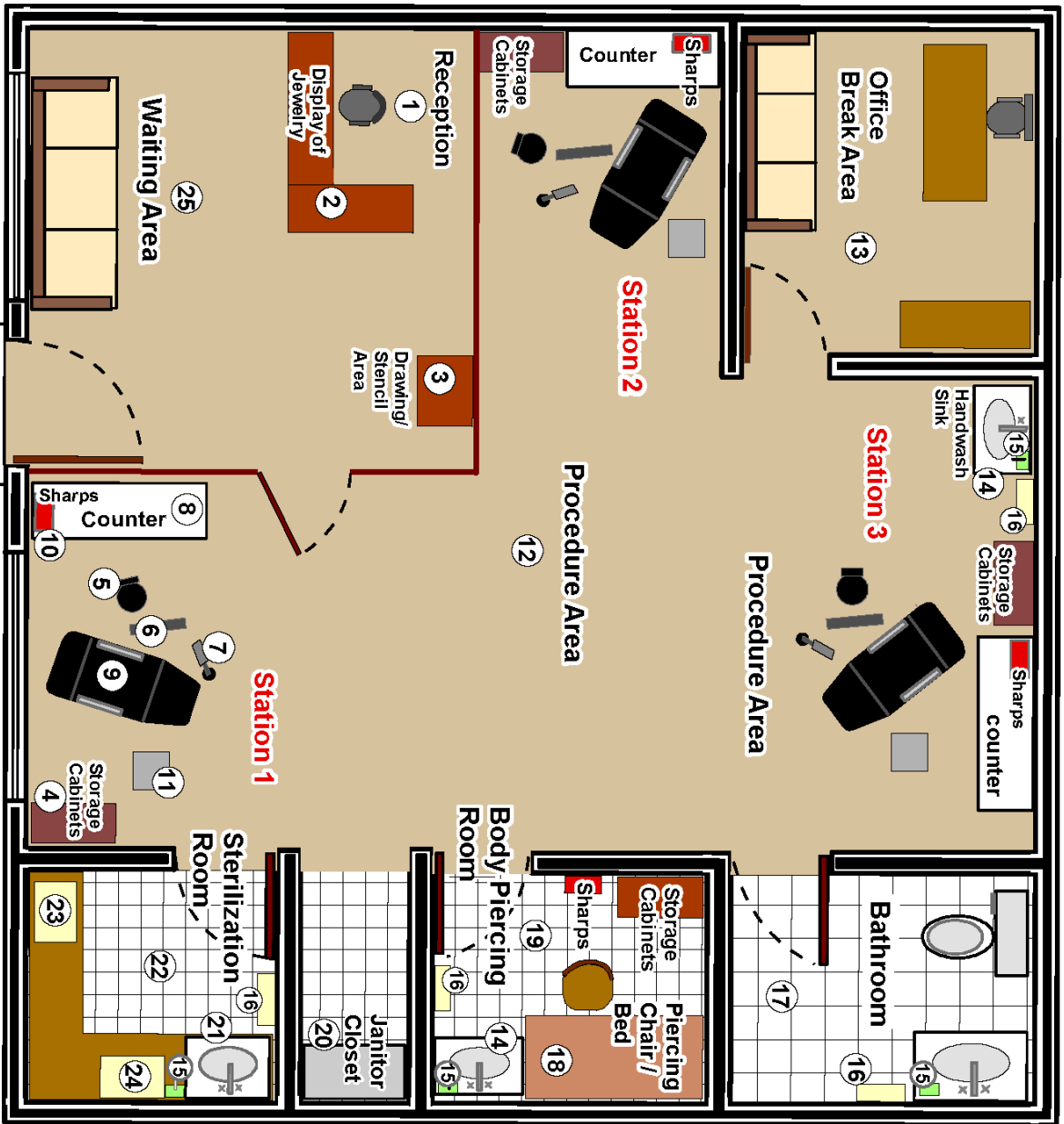
1. General Premises
 - A. Floors in the work areas and restroom shall be constructed of materials that are smooth, nonabsorbent, free of open holes and washable. **CHSC §119314(a)(2)**
 - B. The walls in work areas shall be smooth, free of open holes and washable. **CHSC §119314(a)(2)**
 - C. The premises shall be constructed and maintained to be free from insect or rodent infestation. **CHSC §119314(a)(3)**
 - D. The facility must have adequate toilet facilities. The sink shall be supplied with hot and cold running water, containerized liquid soap, and single-use paper towels that are dispensed from a wall-mounted, touchless dispenser. All sinks shall be permanently plumbed and meet local building and plumbing codes. **CHSC §119314(a)(5), CHSC §119314(b)(5)**
2. Procedure Areas
 - A. The procedure areas must be separated by a wall or ceiling-to-floor partition, from nail and hair activities. Body art can only be performed in the procedure area of the facility. **CHSC §119314(b)(2)**
 - B. This area must be equipped with an accessible sink supplied with hot and cold running water, containerized liquid soap, and single-use paper towels that are dispensed from a wall-mounted, touchless dispenser that is accessible to the practitioner. All sinks shall be permanently plumbed and meet local building and plumbing codes. *Note: One sink may be sufficient to service an open practitioner area if deemed appropriate by inspector.* **CHSC §119314(b)(4), CHSC §119314(b)(5)**
 - C. The procedure area must be equipped with a light source that provides adequate light for procedures. **CHSC §119314(b)(1)**

- D. Lined waste containers shall be available in the procedure area. **CHSC §119314(d)**
- E. A sealable, rigid and puncture proof 'sharps container' must be provided at each work station for the disposal of single-use sharp objects that come in contact with blood and/or body fluids that is labeled with the words "Sharps Waste" or the international biohazard symbol and the word "BIOHAZARD". *Note: One container may be sufficient to service an open practitioner area if deemed appropriate by inspector.* **CHSC §119314(e) & (e)(2)**
3. Decontamination and sterilization areas:
- A. Unless all equipment and supplies used in the course of a body art procedure are single-use, purchased as pre-packaged and pre-sterilized, the body art facility shall have a decontamination room or area for cleaning instruments and equipment. **CHSC §119315(f)**
- 1) The decontamination and sanitization area must be separated from the procedure area by a space of at least five feet or by a cleanable barrier. **CHSC §119314(c)(1)**
 - 2) This area must be equipped with a sink, hot and cold running water, containerized liquid soap in a wall-mounted dispenser, and single-use paper towels dispensed from a wall-mounted, touchless dispenser that is readily accessible to the practitioner. All sinks shall be permanently plumbed and meet local building and plumbing codes. **CHSC §119314(c)(2), CHSC §119314(b)(5)**
 - 3) Lined waste containers shall be available in the decontamination and sterilization area. **CHSC §119314(d)**
 - 4) This area must be equipped with an approved steam autoclave. Chemical and dry heat sterilizers are not accepted. **CHSC §119315(b)(1), 119309(e)**

DOCUMENTATION

1. An Infection Prevention and Control Plan (IPCP) shall be submitted with plans. This document must be available for inspection at all times. Staff should review the document at least annually. **CHSC §119312(d) 1, CHSC §119313(a)(e)**
2. Proof of approved sharps removal must be provided prior to final approval to operate. Documentation must be maintained for 3 years. **CHSC §119314(e) 3,4**
3. Sterilization equipment shall be tested using a commercial biological indicator monitoring system. This test must be made available to inspector at time of final plan check inspection of the facility and must have been performed within 30 days of that inspection in order to be valid. Proof of monthly testing must be maintained and available for inspection at all times. Test results must be maintained for 3 years. **CHSC §119315(b) 2,4**
4. Proof of single use equipment sterilization must be obtained from the manufacturer and maintained at the facility at all times. All purchase orders and must be maintained for 90 days. **CHSC §119315(f)**
5. Provide copies of the facility's consent form and medical questionnaire for review. **CHSC §119303**

Example Site Plan



1	Reception Desk
2	Display Case
3	Drawing / Stencil Area
4	Storage Cabinets *
5	Chair
6	Armrest
7	Lamp
8	Counter *
9	Procedure Area Bed / Chair
10	Sharps Containers
11	Work Station Tray
12	Procedure Area *
13	Office / Break Room
14	Handwash Sink *
15	Liquid Soap *
16	Single - Use Paper Towel Dispenser *
17	Bathroom *
18	Piercing Chair / Bed
19	Body Piercing Room *
20	Janitor Closet
21	Bio Sink *
22	Sterilization Room *
23	Autoclave *
24	Ultrasonic Machine
25	Waiting Room *

* Items containing this asterik are required to be shown on the scaled plans.

Room/Area Materials and Finishes

ROOM OR AREA	FLOOR	WALLS
<i>Example: Restroom</i>	<i>Smooth quarry tile</i>	<i>Gypsum board; smooth; semi-gloss paint Swiss coffee</i>
Restroom		
Procedure Areas		
Decontamination and Sterilization Room		
Body Piercing Room		
Drawing/Stencil Area		
Reception and Waiting Area		

Equipment Information – Part One

ROOM OR AREA	LOCATION	MANUFACTURER	MODEL NUMBER
<i>Example:</i>			
Autoclave			
Ultrasonic Machine			
Permanent Cosmetic Machine			
Water Heater Capacity: gal.			

Note: Please provide specification sheets for all equipment.

Equipment Information – Part Two

ROOM OR AREA	DESCRIPTION OF MATERIAL
<i>Example: Restroom</i>	
Practitioner Chair	
Client Chair	
Piercing Table	
Stool	
Arm Rest	
Mayo Trays	
Counters	
Storage Cabinets	
Disposable Instruments	