



## DEPARTMENT OF ENVIRONMENTAL HEALTH County of Riverside

INFORMATIONAL BULLETIN NO. 93-12-DES

DISTRICT ENVIRONMENTAL SERVICES DIVISION

### GUIDELINES FOR A HACCP PLAN FOR SUSHI RICE

A HACCP plan is required when food additives or components, such as vinegar, are used to render a food non Potentially Hazardous (food not requiring refrigeration to prevent microbial growth) such as Sushi rice, according to the California Retail Food Code (Cal code), Article 5. Section 114419.3. The HACCP plan shall indicate all of the following pursuant to Cal code section 114419.1:

- Ingredients, materials and equipment
- Formulation or recipes
- A trained, designated food employee for each location
- Operating Procedures that includes the following:
  - Critical Control Point(s) (CCP)
  - Critical Limit (CL) for each CCP
  - The method and frequency for monitoring the CCPs
  - Corrective Action to be taken if a CL is met or exceeded
  - The method and frequency for verifying the HACCP Plan's procedures
  - Record keeping (addressing each CCP)

The following must be included in the Sushi rice HACCP Plan:

- A Flow Diagram of the specific food identifying the Critical Control Points providing the following information:
  - Ingredients, materials, and equipment used in the preparation of that food.
  - Formulations or recipes that address the food safety concerns involved with that type of food and the methods to control for those concerns.
- A recipe or formulation for the Sushi rice HACCP Plan which must include all of the following:
  - Type of rice, (for example "short grain").
  - The concentration of the vinegar, (for example: 5 %).
- Methods of cooking rice include the time and temperature.
- Methods of preparing vinegar mixture (ex: vinegar, salt and sugar).
- Method of cooling cooked rice, indicate time and temperature.
- Method of mixing rice and vinegar solution.
- Identify the Critical Control Points (e.g. adding vinegar).
- Identify your Critical Limits (target pH is  $\leq 4.4$  and must not reach critical limits  $> 4.6$ ).
- The pH of the Sushi rice must be initially validated by an Accredited Laboratory to indicate the final target pH is 4.4 or less, and does not exceed 4.6 (include laboratory result with submitted plan).
- Methods of measuring and the frequency of monitoring your CCP (for example: measuring the pH daily by using a pH meter accurate to  $\pm 0.2$ ).
- Describe the Corrective action (for example: if the pH is not less than 4.4, more vinegar will be added to the Sushi rice and the rice will be retested, after second test if pH is not less than 4.4 the rice is to be discarded).

**OFFICES IN: RIVERSIDE, BLYTHE, CORONA, HEMET, INDIO, MURRIETA AND PALM SPRINGS**

**For more information call (888) 722-4234**

**Department Web Site – [www.rivcoeh.org](http://www.rivcoeh.org)**

- Policy and procedures regarding storage of Sushi rice should indicate holding time and temperature (for example: 8 hours at 70° F -80° F).
- A sample of Sushi rice must be sent for pH testing to an accredited Laboratory when:
  - Changing recipe or ingredients (for example: changing the type of rice or vinegar)
- Describe policy regarding remaining Sushi rice following the holding time (for example: discard leftover Sushi rice after 8 hours).
- Describe policy regarding record keeping. For example: all records for the Sushi rice HACCP plan and the related documents are to be kept on-site for at least 2 years.

**List of Laboratories measuring the pH of Sushi rice in Southern California:**

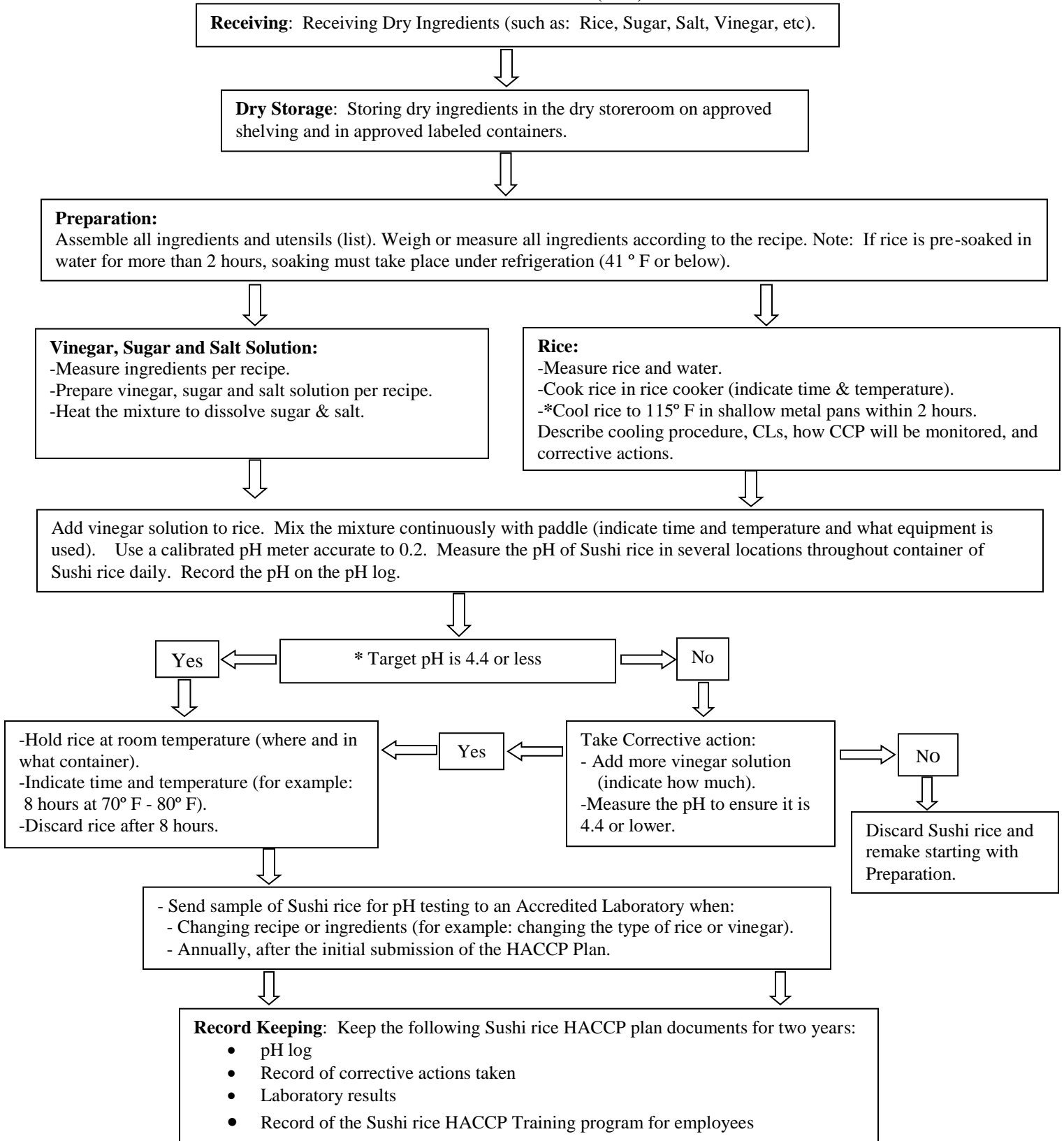
- Ag Tech: (909) 464-2244
- Michaelson Laboratory: (562) 928-0553
- Food Microbiological Laboratories: (714) 657-7527

Please be advised this list may not be inclusive and should not be considered an endorsement by this Department. Please contact the individual laboratories directly to obtain current information regarding their locations, procedures, fees, etc.

**Please note:** Testing shall be done by an approved, third party, accredited laboratory approved by the Department. “In house” laboratory results will not be accepted.

## Example Sushi Rice Flow Diagram

\* = Critical Control Point (CCP)



**OFFICES IN: RIVERSIDE, BLYTHE, CORONA, HEMET, INDIO, MURRIETA AND PALM SPRINGS**

**For more information call (888) 722-4234**

**Department Web Site – [www.rivcoeh.org](http://www.rivcoeh.org)**